



Henry Court

Stanmore

Offers in excess of £275,000

A one bedroom flat available chain free in Stanmore Place with Davidson Frost-Wellings.

The flat is available with a semi open plan kitchen and living room, with a private balcony, a large double bedroom and a family bathroom.

Stanmore Place is in an excellent location for Canon's Park tube station. On site is a gym, a children's playground, security and a 24 hour concierge. The flat also has an allocated car parking space in the secure on-site car park.

Leasehold of 999 years from 1st January 2009.

Ground Rent of approximately £883.58 per year.

Service Charge of approximately £2250 every six months.

Harrow Council Tax Band C.

- One Bedroom
- Private Balcony
- Chain Free
- Secure Parking
- Modern Development
- Long Leasehold

Viewing

Please contact our Davidson Frost-Wellings Office on 020 8954 8806 if you wish to arrange a viewing appointment for this property or require further information.



1



1

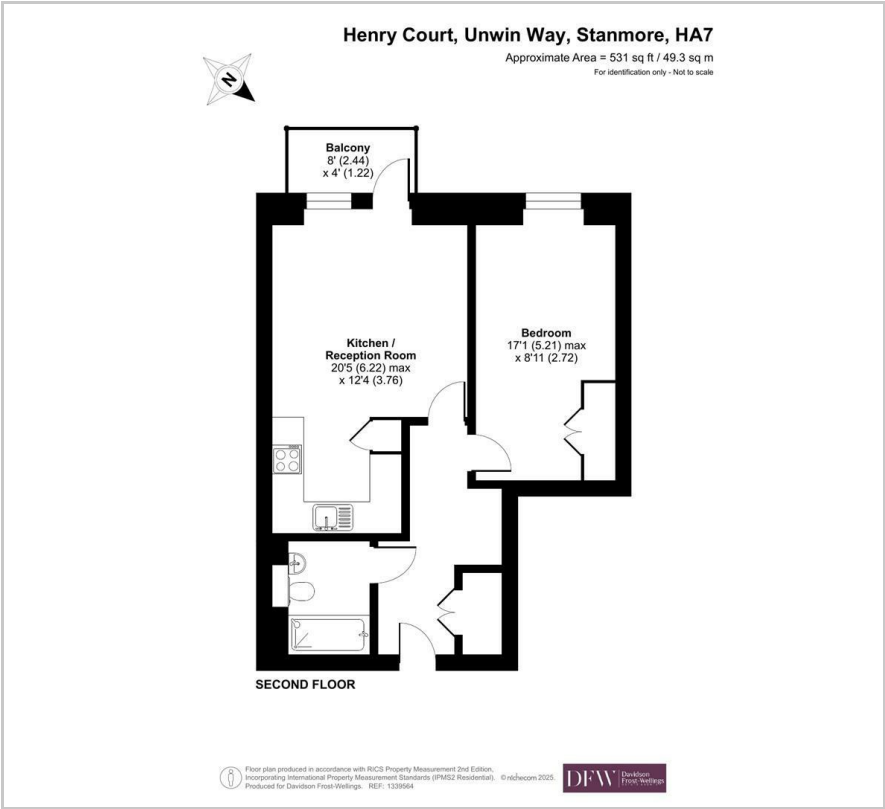


1

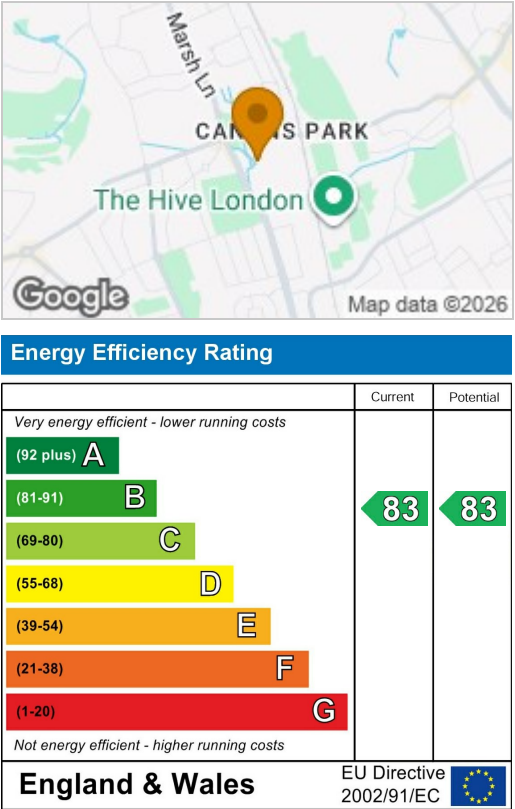


B

Floor Plan



Area Map



These particulars, whilst believed to be accurate are set out as a general outline only for guidance and do not constitute any part of an offer or contract. Intending purchasers should not rely on them as statements of representation of fact, but must satisfy themselves by inspection or otherwise as to their accuracy. No person in this firms employment has the authority to make or give any representation or warranty in respect of the property.